

1A Old Haymarket 73-89 Victoria Street, Liverpool, L1 6AF
Tel: 0151 305 2577
Email: liverpoolsales@ascendproperties.com
www.ascendproperties.com

Ascend

Built on higher standards



Ropemaker Place, 93 Renshaw Street, Liverpool

£850 PCM

We are pleased to present this furnished, 1-bedroom apartment in Liverpool city centre's Ropewalks. This centrally located apartment is perfect for young professionals looking for a clean-cut home with great access to transport links, amenities and nightlife.

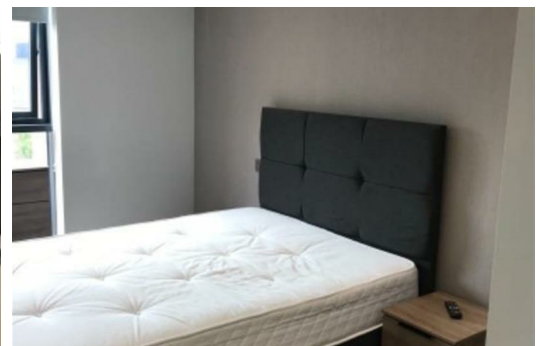
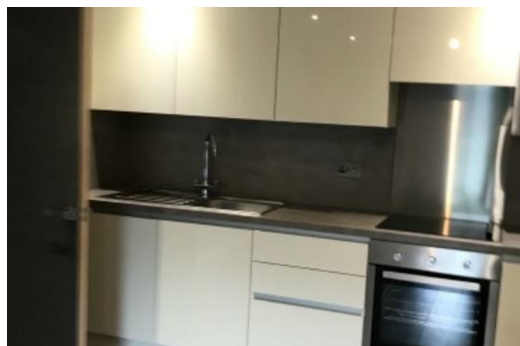
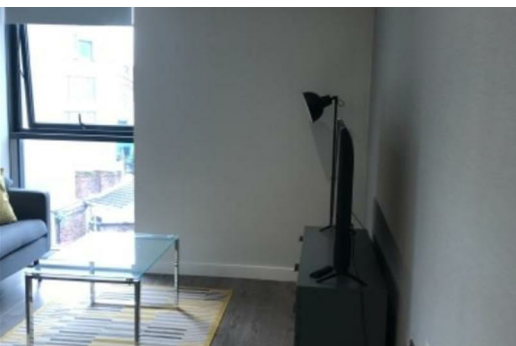
As you walk in, the apartment has a wide, spacious hall leading off to the open plan kitchen and living room, bedroom and bathroom. The kitchen and living area are spacious with a large floor to ceiling window sending in plenty of natural light. The kitchen area is fully fitted with an integrated oven, hob and extractor and has plenty of cupboard and surface space. With a smooth, white finish this kitchen looks fantastic and is super easy to wipe down.

The bedroom has a sumptuous décor with warm, homely and modern colours on the walls and for the carpet. This room also benefits from a large floor to ceiling window making it a fantastic oasis at the end of a long day. The bathroom is a modern, 3-piece suite with a high-quality finish throughout and plenty of shelf space to keep all the necessities.

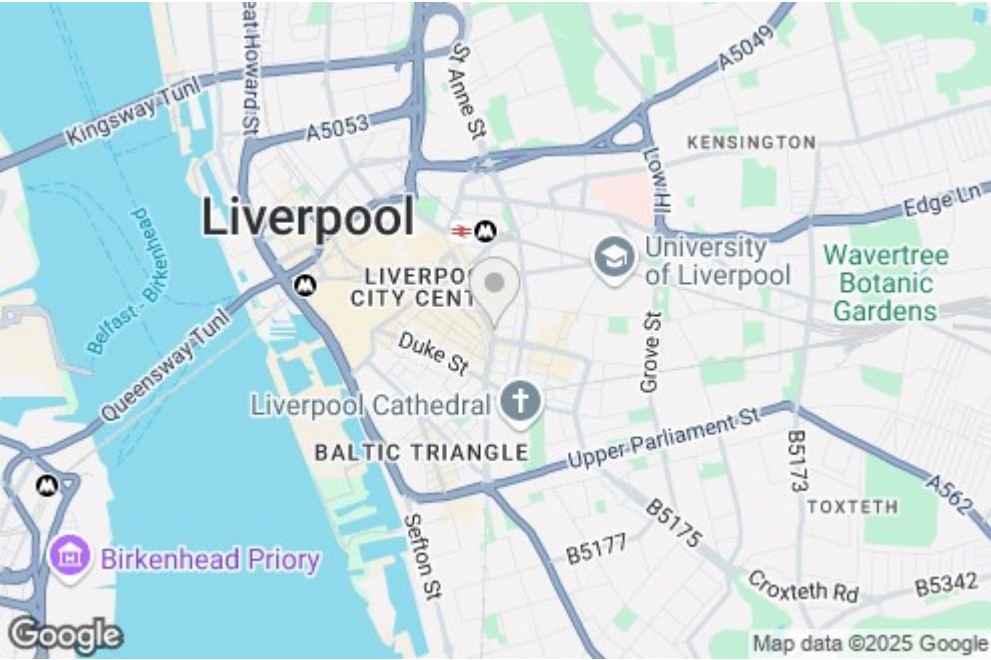
Located less than a 10-minute walk to Liverpool ONE, you really do have all the necessary amenities on your doorstep. You'll also benefit from being just a 7-minute walk to Liverpool Central train station making this a fantastic spot for not only those working in Liverpool itself, but those commuting in and out of the city too.

This apartment is a rare find so be quick, get in touch and arrange a viewing today.

Available 24th July 2025. 12 Month Tenancy. Deposit £980. Council Tax Band B.



504 Ropemaker 89-97 Renshaw Street, Liverpool, Merseyside, L1 2SP



Energy Efficiency Rating			Environmental Impact (CO ₂) Rating		
Very energy efficient - lower running costs	Good	Pass	Very environmentally friendly - lower CO ₂ emissions	Good	Pass
92-100 A	85	85	92-100 A	B	B
81-91 B			81-91 B		
71-80 C			71-80 C		
61-70 D			61-70 D		
51-60 E			51-60 E		
41-50 F			41-50 F		
31-40 G			31-40 G		
Not energy efficient - higher running costs			Not environmentally friendly - higher CO ₂ emissions		